



## Technical specifications and instructions



### **3CP Stainless Steel Plunger pump**

#### **Models**

**3CP1221**

**3CP1231**

**3CP1241**

#### Specifications (\*)

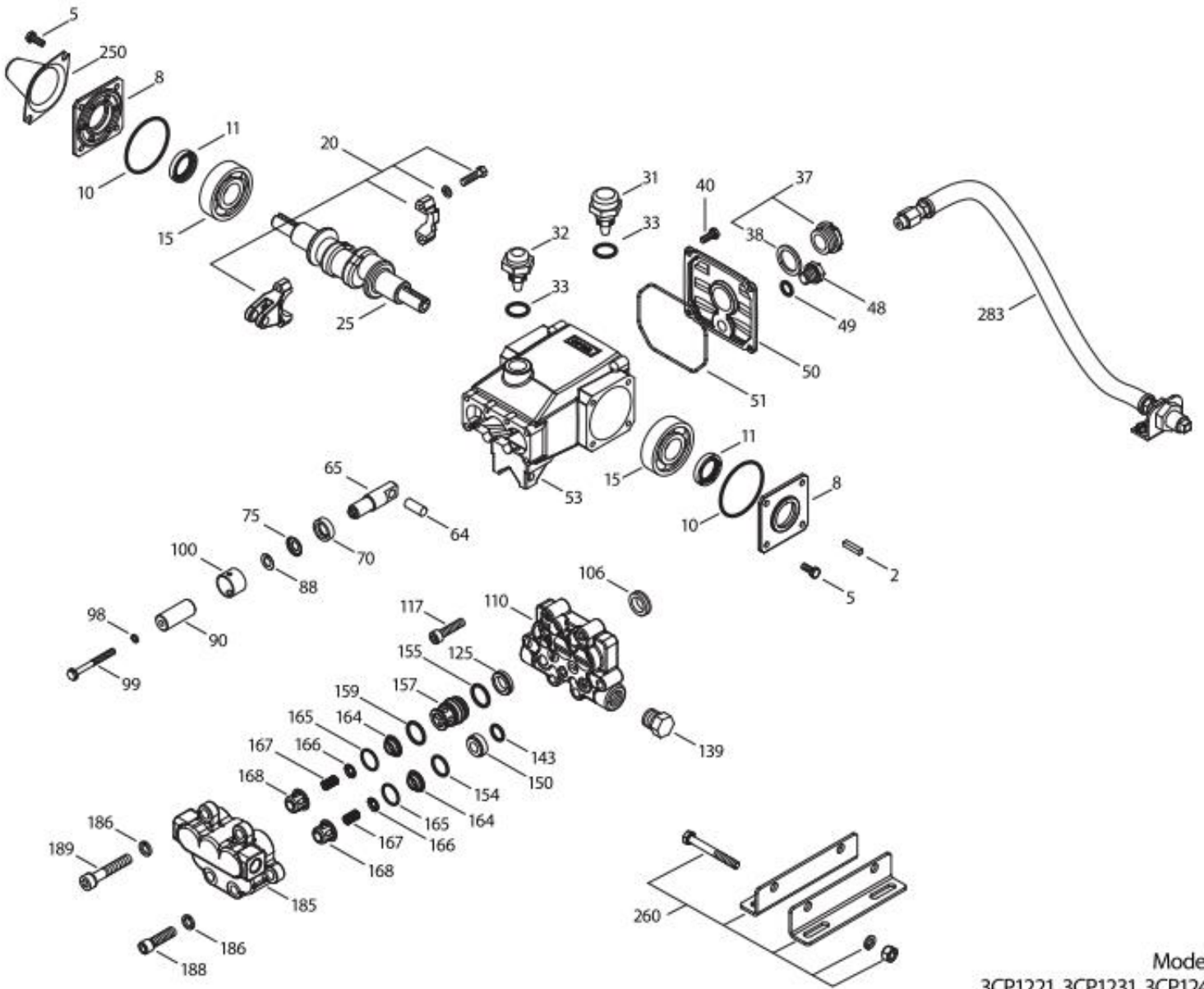
	<b>Model 3CP1221</b>	<b>Model 3CP1231</b>	<b>Model 3CP1241</b>
<b>Flow</b>	13,5 l/min	7 l/min	11,5 l/min
<b>Pressure range</b>	7 to 140 bar	7 to 140 bar	7 to 140 bar
<b>RPM</b>	1420 RPM	1420 RPM	1420 RPM
<b>Stroke</b>	12,7 mm	7,3 mm	11 mm

#### Common specifications

<b>Inlet pressure range</b>	Flooded to 4.9 bar
<b>Bore</b>	18 mm
<b>Crankcase capacity</b>	0,35 L
<b>Maximum liquid temperature</b>	71° C
<b>Inlet ports (2)</b>	1/2" NPTF
<b>Discharge ports (2)</b>	3/8" NPTF
<b>Shaft diameter</b>	16,5 mm
<b>Weight</b>	6,7 kg
<b>Dimensions</b>	246 x 223 x 136 mm

(\*) Abnormalities permitted only after consultation and written confirmation from Cat Pumps.

# Exploded View



Models  
3CP1221, 3CP1231, 3CP1241  
September 2016

# Parts list

Item	Num.	Mat.	Description	Qty
	<b>3CP1221</b>			
	<b>3CP1231</b>			
	<b>3CP1241</b>			
2	30047	STL	Key (M5x5x24)	1
5	92538	S	Screw, HHC sems (M6x16)	8
8	46901	AL	Cover, bearing	2
10	14028	NBR	O-ring, cover, bearing – 70D	2
11	43222	NBR	Seal, oil, crankshaft	2
15	14480	STL	Bearing, ball	2
20	48730	TNM	Rod assembly, connecting	3
25	<b>46927</b>	<b>FCM</b>	Crankshaft, dual end – 3CP1221 (M12.7)	1
	<b>46994</b>	<b>FCM</b>	Crankshaft, dual end – 3CP1231 (M7.3)	1
	<b>46991</b>	<b>FCM</b>	Crankshaft, dual end – 3CP1241 (M11)	1
31	127409	-	Cap, vented w/O-ring (rain cap)	1
32	46798	RTP	Cap, oil filler	1
33	14179	NBR	O-ring, oil filler cap – 70D	1
37	92241	-	Gauge, oil, bubble w/gasket – 80D	1
38	44428	NBR	Gasket, flat, oil gauge – 80D	1
40	92538	S	Screw, HHC sems (M6x16)	4
48	25625	STCP	Plug, drain (1/4" x 19 BSP)	1
49	23170	NBR	O-ring, drain plug – 70D	1
50	46939	AL	Cover, rear	1
51	14041	NBR	O-ring, rear cover – 70D	1
53	48644	AL	Crankcase	1
64	46615	CM	Pin, crosshead	3
65	48459	BBNP	Rod, plunger	3
70	46839	NBR	Seal, oil, crankcase	3
75	43900	S	Slinger, barrier	3
88	45697	S	Washer, keyhole (M18x10)	3
90	46976	CC	Plunger (M18x43)	3
97	76729	SS	Washer, flat (not shown, use with 76730)	3
98	46730	NBR	Washer, seal – 90D	3
	48394	FPM	Washer, seal – 90D	3
	# 48432	EPDM	Washer, seal	3
	76730	PTFE	Ring, sealing	3
99	+48201	SS	Retainer, plunger	3
100	46541	PVDF	Retainer, seal	3
106	44053	NBR	Seal, LPS w/SS-Spg	3
	44926	FPM	Seal, LPS w/SS-Spg	3
	76243	ST2	Seal, LPS w/S-spg	3
	# 46651	EPDM	Seal, LPS w/SS-Spg	3
110	48556	SS	Manifold, inlet	1
117	119034	S	Screw, HSH (M8x35)	4
125	44652	SNG	Seal, HPS w/SS	3
	44925	FPM	Seal, HPS w/SS	3
	46652	HT	Seal, HPS w/SS, 2-pc w/ S-Support	3
	76052	ST4	Seal, HPS w/S	3
139	45156	SS	Plug, inlet (1/2"-14 NPTM)	1
143	17547	NBR	O-ring, adapter, valve, rear – 85D	3
	11685	FPM	O-ring, adapter, valve, rear – 85D	3
	# 46648	EPDM	O-ring, adapter, valve, rear – 70D	3
	703308	IPFE	O-ring, adapter, valve, rear – 85D	3
150	44060	SS	Adapter, valve	3
154	43893	NBR	O-ring, adapter, valve, front – 80D	3

	44927	FPM	O-ring, adapter, valve, front	3
	# 46649	EPDM	O-ring, adapter, valve, front – 80D	3
	703307	IPFE	O-ring, adapter, valve, front – 80D	3
155	26089	NBR	O-ring, adapter, valve, rear – 80D	3
	11377	FPM	O-ring, adapter, valve, rear – 80D	3
	# 46647	EPDM	O-ring, adapter, valve, rear – 80D	3
	703244	IPFE	O-ring, adapter, valve, rear – 75D	3
157	44059	SS	Adapter, valve	3
159	26089	NBR	O-ring, adapter, valve, front – 80D	3
	11377	FPM	O-ring, adapter, valve, front – 80D	3
	# 46647	EPDM	O-ring, adapter, valve, front – 80D	3
	703244	IPFE	O-ring, adapter, valve, rear – 75D	3
164	44058	SS	Seat	6
165	44001	NBR	O-ring, seat – 80D	6
	44928	FPM	O-ring, seat – 80D	6
	# 46650	EPDM	O-ring, seat – 80D	6
166	44057	SS	Valve	6
167	44056	SS	Spring	6
168	44055	SS	Retainer, spring	6
185	48558	SS	Manifold, discharge	1
186	15847	S	Lockwasher (M10)	6
188	87950	S	Screw, HSH (M10x35)	2
189	87952	S	Screw, HSH (M10x55)	4
250	118672	STCP	Protector, shaft	1
260	30612	STZP	Rail, angle assy	1
270	30246	STL	Pulley & key assy (incls. 30032, 30047)(see TB 003)	1
283	34334	-	Kit, oil drain (3/8" x 24")	1
299	816719	SS	Head, complete with NBR seals & O-rings	1
300	33985	NBR	Kit, seal (incls. 98,106,125,143,154,155,159) <b>standard</b>	1
	33309	FPM	Kit, seal (incls. 98,106,125,143,154,155,159)	1
	# 33944	EPDM*	Kit, seal (incls. 98,106,125,143,154,155,159)	1
	76136	HT	Kit, seal (incls. 98,106,125,143,154,155,159)	1
	76167	STHT	Kit, seal (incls. 98,106,125,143,154,155,159)	1
	76985	IPFE	Kit, seal (incls. 97,98,106,125,143,154,155,159)	1
310	30982	NBR	Kit, valve (incls: 143,154,159,164,165,166,167,168) <b>standard</b>	1
	31216	FPM	Kit, valve (incls: 143,154,159,164,165,166,167,168)	1
	# 31217	EPDM	Kit, valve (incls: 143,154,159,164,165,166,167,168)	1

**Bold print numbers are unique to a particular pump model. Italics are optional items. #** Silicone/grease required.

+ Production parts are different than repair parts. R components comply with RoHs Directive.

{ } Date of latest production change. \* Review individual parts in each kit for material code identification.

See 'Tech Bulletins' 002, 003, 024, 036, 043, 053, 060, 061, 064, 073, 074, 077, 083 and 103 for additional information.

Material codes: (not part or part number)

AL	Aluminum	FCM	Forged chrome-moly	SBCP	Special Brass/chrome plated
BB	Brass	FPM	Fluorocarbon	SNG	Special blend (Buna)
BBCP	Brass/chrome plated	HS	High strength	SS	316 stainless steel
BBNP	Brass nickel plated	HT	Hi-Temp (EPDM alternative)	STL	Steel
CC	Ceramic	IPFE	I-Perfluoroelastomer	STCP	Steel / chrome plated
CM	Chrome-moly	NBR	Medium nitrile (Buna-N)	STHT	Special PTFE High temp
D	Acetal	PVDF	Polyvinylidene fluoride	STZP	Steel / zinc plated
EPDM	Ethylene Propylene Diene Mon.	S	304 stainless steel	TNM	Special high strength
FBB	Forged brass				